

News, Opportunities and Deadlines for September 2018

Requesting Research Proposals for LBRN funding



We are pleased to announce the launch of the Letter of Intent for the following LBRN Fund Proposals competitions. Letter of Intent (LOI) Deadline: September 10, 2018 at 4:30pm and Internal Submission Deadline: Friday, October 26, 2018.

For more information on each proposal type available and the other deadline and proposal details, continue to the FULL STORY below.

Letter of Intent (LOI) Deadline: September 10, 2018 at 4:30pm.

The following fund proposal competitions are available below:

- Shared Instrument
- Startup Project
- Pilot Project
- Full Project

Click on the appropriate → links below to submit your Letter of Intent for the following fund proposal competitions:

Shared Instrument fund proposal competition

- Internal Submission Deadline: Friday, October 26, 2018
- Award Cycle: 2019-2020
- Discipline/Subject Area: Biomedical Research
- Funding Available: 25,000.00
- Description:

The purpose of this RFA is to solicit new projects for the LBRN Shared Instrumentation Project program with funding up to a maximum of \$25,000. This program is designed to contribute partial support funding (usually half of the purchase price) up to \$25,000 Total Direct Cost. The expected start date for this project is May 1, 2019 for 1 year of funding through April 30, 2020. The selection and distribution of these projects by the Steering

Committee will be based on the quality of the proposal and the needs of the LBRN program. Proposed projects should be consistent with the program's focal research areas (listed below). All interested researchers are encouraged to contact [Dr. Ramesh Subramanian \(ramji@lsu.edu\)](mailto:ramji@lsu.edu) prior to submitting a proposal to ensure that the proposed research is eligible for inclusion in this program. Please submit the Letter of Intent (LOI) by September 10, 2018 4:30 pm. Only those applicants who submit the LOI will be able to submit a proposal.

→ [Shared Instrument Fund Proposal Letter of Intent](#)

Startup Project fund proposal competition

- Internal Submission Deadline: Friday, October 26, 2018
- Award Cycle: 2019-2021
- Discipline/Subject Area: Biomedical Research
- Funding Available: 50,000.00
- Description:

The purpose of this RFA is to solicit new projects for the LBRN Startup Project program with funding up to a maximum of \$50,000. This program is designed to contribute partial support funding (usually half of the purchase price) up to \$25,000 Total Direct Costs per year for up to 2 years. The expected start date for this project is May 1, 2019 for 2 years of funding through April 30, 2021. The selection and distribution of these projects by the Steering Committee will be based on the quality of the proposal and the needs of the LBRN program. Proposed projects should be consistent with the program's focal research areas (listed below). All interested researchers are encouraged to contact [Dr. Ramesh Subramanian \(ramji@lsu.edu\)](mailto:ramji@lsu.edu) prior to submitting a proposal to ensure that the proposed research is eligible for inclusion in this program. Please submit the Letter of Intent (LOI) by September 10, 2018 4:30 pm. Only those applicants who submit the LOI will be able to submit a proposal.

→ [Start-up Fund Proposal Letter of Intent](#)

Pilot Project fund proposal competition

- Internal Submission Deadline: Friday, October 26, 2018
- Award Cycle: 2019-2020
- Discipline/Subject Area: Biomedical Research
- Funding Available: 50,000.00
- Description: The purpose of this RFA is to solicit new projects for the LBRN program. The expected start date for this project is May 1, 2019 for 1 year of funding through April 30, 2020. The selection and distribution of these projects by the Steering Committee will be based on the quality of the proposal and the needs of the LBRN program. Proposed projects should be consistent with the program's focal research areas (listed below). All interested researchers are encouraged to contact [Dr. Ramesh Subramanian \(ramji@lsu.edu\)](mailto:ramji@lsu.edu) prior to submitting a proposal to ensure that the proposed research is eligible for inclusion in this program.

→ [Pilot Fund Proposal Letter of Intent](#)

Full Project fund proposal competition

- Internal Submission Deadline: Friday, October 26, 2018
- Award Cycle: 2019-2022
- Discipline/Subject Area: Biomedical Research
- Funding Available: 100,000.00
- Description: The purpose of this RFA is to solicit new projects for the LBRN Full Project program, with funding up to a maximum of \$100,000. The expected start date for this project is May 1, 2019 for 3 years of funding

through April 30, 2022. Funding for years 2 and 3 will be subject to competitive renewal of the program. The selection and distribution of these projects by the Steering Committee will be based on the quality of the proposal and the needs of the LBRN program. Proposed projects should be consistent with the program's focal research areas (listed at: lbrn.lsu.edu). All interested researchers are encouraged to contact [Dr. Ramesh Subramanian \(ramji@lsu.edu\)](mailto:Dr.Ramesh.Subramanian@lsu.edu), prior to submitting a proposal to ensure that the proposed research is eligible for inclusion in this program. Please submit the Letter of Intent (LOI) by September 10, 2018 4:30 pm. Only those applicants who submit the LOI will be able to submit a proposal.

→ [Full Fund Proposal Letter of Intent](#)

LBRN Steering Committee Meeting

LBRN Steering Committee Meeting

- Friday, Sep. 21st 2018, 1p.m. – 6p.m.
- Center for Computation & Technology, LSU
- Steering committee, Admin core, BBC core, MCBR core and PUI campus representatives
- Conference agenda will be posted soon



Louisiana Biomedical Research Network

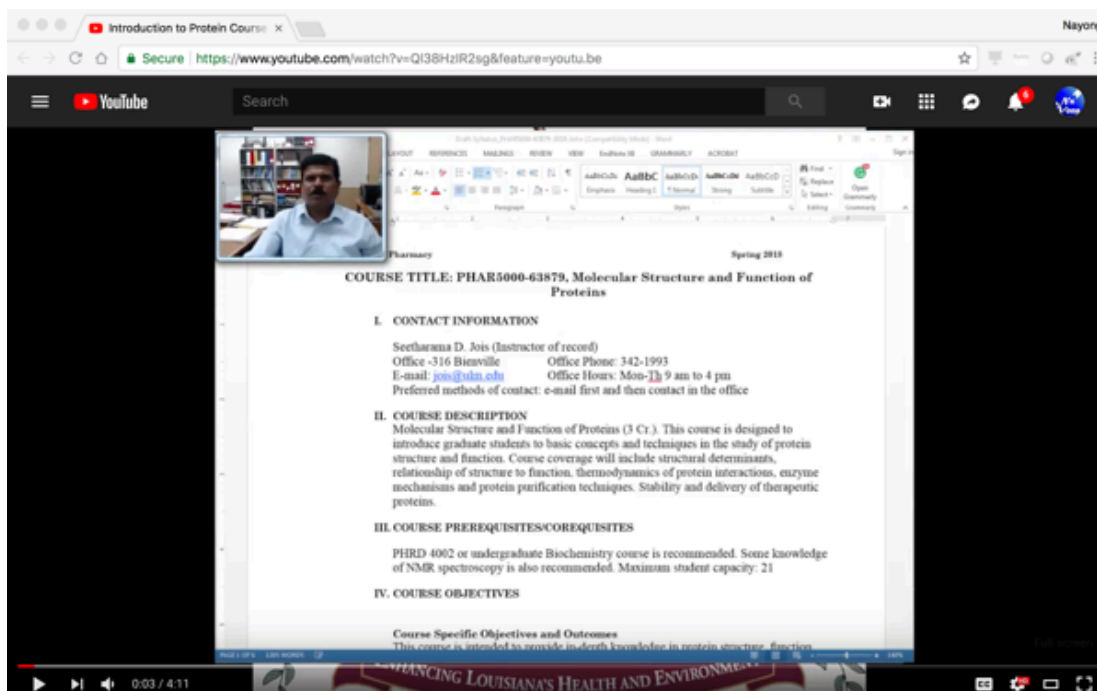
LBRN will held the Steering Committee meeting with each cores and its participants at Sep. 21st at the Center for Computation & Technology, LSU. Please mark it on your calendar.

Please register for the conference now!

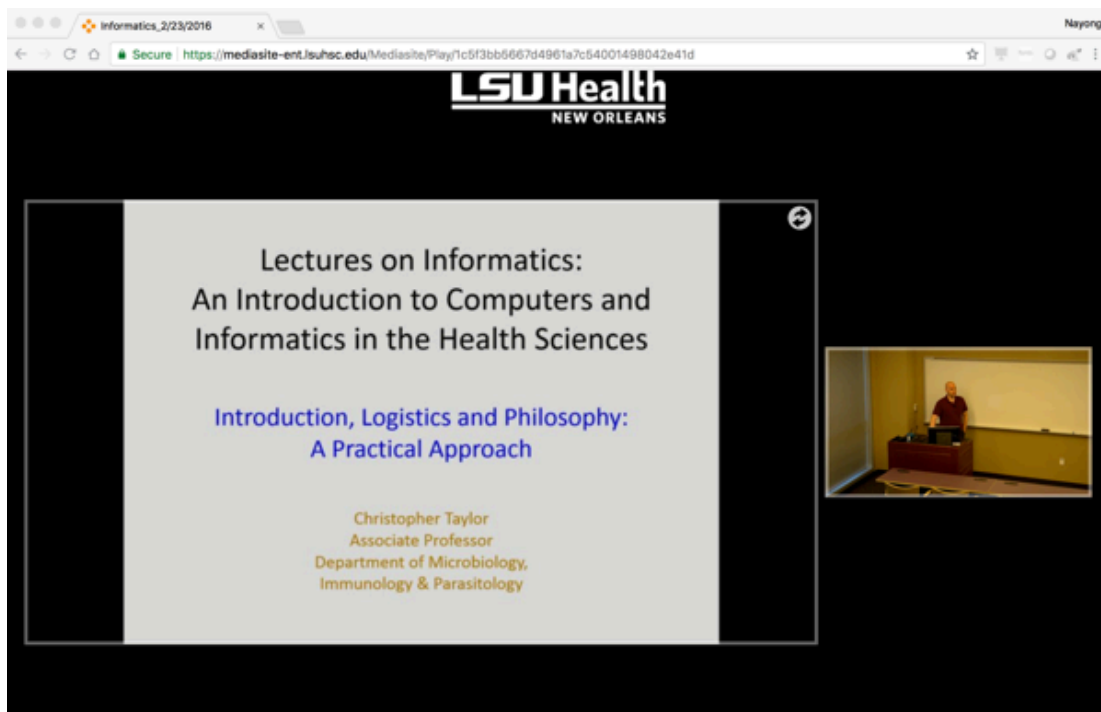


LBRN Lecture Series

This is a series on Molecular Structure and Function of Proteins. Opt-in to this lecture series can be made by this link: [Protein Course Opt-In](#) and the following are freely accessible without opt-in permissions the [Introduction to Protein Course](#) and the first lecture of the series: [Part 1: Basics of Amino Acids](#) there are 16 parts to the lecture series and the course opt-in form will give Dr. Jois' contact information for anyone more interested in the lecture series.



Please note the already available lecture series by Dr. Chris Taylor on “An Introduction to Computers and Informatics in the Health Sciences” and “An Introduction to Microbial Community Sequencing and Analysis” already available [Lecture Series Site](#) from the LBRN BBC Core page: <http://lbrn.lsu.edu/bbc-core.html>



NIH : Academic Research Enhancement Award for Undergraduate-Focused Institutions (R15 - Clinical Trial Not Allowed)



National Institutes of Health
Office of Extramural Research

Grants & Funding

NIH's Central Resource for Grants and Funding Information

A new **NIGMS R15 AREA program FOA** ([PAR-18-714](https://grants.nih.gov/grants/guide/pa-files/PA-18-714.html)) that has been published today. The purpose of this Academic Research Enhancement Award (AREA) for Undergraduate-Focused Institutions is to support small scale research grants at institutions that do not receive substantial funding from the NIH, with an emphasis on providing biomedical research experiences primarily for undergraduate students, and enhancing the research environment at these applicant institutions. Eligible institutions must award baccalaureate science degrees, and have received less than 6 million dollars per year of NIH support (total costs) in 4 of the last 7 fiscal years. **This AREA FOA emphasizes the engagement and inclusion of undergraduates in research.**

See the details of this FOA at: <https://grants.nih.gov/grants/guide/pa-files/PA-18-714.html>

Please note the following changes in NIGMS Support of Academic Research Enhancement Award (R15) Grants as published in the Notice (PAR-18-714):

1. NIGMS will no longer accept New, Renewal, Resubmission or Revision applications for R15 grants under the NIH Parent R15 Funding Opportunity Announcement (FOA) ([PA-18-504](https://grants.nih.gov/grants/guide/pa-files/PA-18-504.html) and subsequent reissuances).
2. All R15 applications for NIGMS support must be submitted to [PAR-18-714](https://grants.nih.gov/grants/guide/pa-files/PA-18-714.html) "Academic Research

Enhancement Award for Undergraduate-Focused Institutions".

The first AIDS Application due date for this FOA is September 7, 2018

[More details...](#)

BBC Core Educational Resource



The BBC Core provides introductory educational lecture series on informatics topics that are recorded and streamed. Prior offerings that are available for on demand streaming include;

- An Introduction to Computers and Informatics in the Health Sciences

<http://metagenomics.lsuhsu.edu/lectures/introinformatics/>

- An Introduction to Microbial Community Sequencing and Analysis

<http://metagenomics.lsuhsu.edu/lectures/intromicrobiota/>

On demand streaming links are available by each lecture along with downloadable lecture slides.

HPC Training



The schedule for the Fall 2018 HPC Training is available at <http://www.hpc.lsu.edu/training/tutorials.php>.

Our next HPC training will be held on Wednesday, September 19 at 9:00 AM in 307 Frey Computing Service Center and broadcast through WebEx for remote users.

Note that all HPC trainings will start at 9:00AM.

Wednesday, September 19, 2018: Basic Shell Scripting

For anyone who works in a Linux/Unix environment, a working knowledge of shell scripting is essential and will boost their efficiency and productivity tremendously. For this tutorial, we will focus on bash as it is one of the most popular shells. This tutorial will include topics such as creating simple bash scripts, flow control, command line arguments, regex, grep, awk and sed. This is a practical tutorial, so we will provide examples and/or hands-on exercises for most of the covered materials.

Prerequisites: Access to a Linux/Unix based computer i.e. Linux (VirtualBox images provided at HPC website), Mac OSX and Windows with Cygwin and Bash installed.

Next HPC Training:

Wednesday, September 26, 2018: Version Control using Git

Version control system is used for tracking changes in computer files and coordinating work on those files among multiple people. It is primarily used for source code management in software development and also used to keep track of changes in any set of files. This tutorial gives an introduction to the Git version control software and will cover the following topics:

- * Basic Git usage: create, manage and tracking changes in git repository
- * Working with Git branch
- * Remote repository.

Prerequisites: A laptop/desktop with Git installed, OR LONI/LSU HPC account to access the Git installed on cluster

Please visit <http://www.hpc.lsu.edu/training/tutorials.php> for more details and register using the link provided. Users who plan on joining remotely will be provided with a WebEx Link in their registration confirmation email. Please see the system requirements at <https://grok.lsu.edu/Categories.aspx?parentCategoryId=3381>.

LONI HPC Allocation for LBRN



We are happy to announce that High Performance Computing allocation for supporting LBRN/BBC Core community from the LONI HPC system.

This can be utilized in lieu of individual investigators having to apply for and acquire their own allocations to access the HPC resources. If any of your campus members need access to high performance computing, please have them interface with [Dr. Nayong Kim](#).

CFA for Short Term Core Projects



Molecular Cell Biology Research Resources Core (**MCBRC**) and Bioinformatics, Biostatistics, and Computational Biology Core (**BBCC**) are calling for proposals to carry out short term projects in collaboration with the Cores. All LBRN researchers can submit a proposal for a defined project that can be carried out in collaboration with the Core facilities listed in the attached Call for Proposals (CFP) on a competitive basis. Each selected project will be allocated \$1,500 to fully or partially offset Core expenses. More details can be found in the

attached CFP.

[More details can be found in the attached CFP.](#)

NIH Extramural Nexus (NIH/OD)



• **Funding Longevity by Gender Among NIH-Supported Investigators**

For nearly 10 years, more women than men received PhDs in the biomedical sciences, yet women are still underrepresented at every subsequent stage of academic advancement. In 2015, for example, women earned 53% of PhDs, but they comprised only 48% of post-doctoral fellows, 44% of assistant professors, and 35% of professors. To better understand what might be contributing to women's underrepresentation in later stages of academia, Dr. Lisa Hechtman and her colleagues at the National Institute of General Medical Sciences (NIGMS) analyzed "funding longevity by gender" among funded NIH investigators. Their analysis, recently published in the Proceedings of the National Academy of Sciences, yielded a number of interesting findings which I'd like to share with you.

[...Continue reading](#)

• **We Want Your Feedback About Results Reporting for Basic Science Studies Involving Human Participants**

We have written several blogs and articles over the past two years about our efforts to enhance stewardship and

transparency in clinical trial research. Indeed, earlier this year Congress applauded our efforts thus far and reaffirmed its commitment to ensuring public access to the results of the NIH-funded clinical trials through timely registration and results information reporting on [ClinicalTrials.gov](https://clinicaltrials.gov). However, we have heard concern about how the NIH's Policy on the Dissemination of NIH-Funded Clinical Trial Information applies to fundamental studies involving human participants.

[...Continue reading](#)

Top Stories

• **Protecting Human Research Participants (PHRP) Online Tutorial No Longer Available as of September 26, 2018**

We recently released a policy notice announcing that as of September 26, 2018, the NIH will no longer be offering the Protecting Human Research Participants (PHRP) course. It is important to note that investigators are still required to comply with all aspects of the NIH policy Required Education in the Protection of Human Research Participants, and can do so through a different training program or course.

[... Continue reading](#)

• **Time is Limited to Save on the 2018 NIH Regional Seminar on Program Funding & Grants Administration in San Francisco – Act Now!**

On Friday, Sept. 14, General Registration Rates end for this valuable and unique learning opportunity, designed for those new to working with the NIH grants process. If you are interested in attending the Fall NIH Regional Seminar in San Francisco, CA (Oct. 17-19) and have not registered yet, then now is the time!

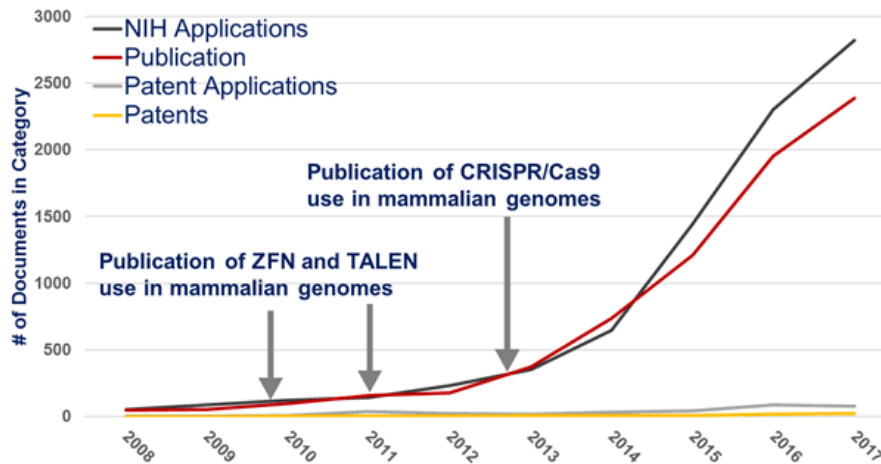
[... Continue reading](#)

• **RCDeCade: A Case Study to Show NIH Support Trends in an Emerging Scientific Field**

A few weeks ago, we touted the value of the NIH's Research, Condition, and Disease Classification (RCDC) system to give us consistent annual reporting on official research budget categories and the ability to see trends in spending over time. RCDC's robust scientific validation process, which allows for such consistency, provides public transparency into over 280 different NIH budget categories.

RCDC categories do not encompass all types of biomedical research. So, how can we get this type of data for other research areas that are not encompassed in RCDC categories, especially those which are newly emerging

fields? Are we able to use the same thesaurus-based classification system to explore other research trends?



... Continue reading

New Resources

• Refresh Your Knowledge of Roles in eRA Commons

Have to quickly see who can do what in eRA Commons? Check out these handy guides for both at a glance and detailed information on the roles and privileges of eRA Commons users.

Master the Matrix: eRA Commons Roles & Privileges Matrix

Quickly see at a glance who can do what in the Commons using the [eRA Commons Roles & Privileges Matrix](#), a convenient chart where roles are divided by categories and color coded (scientific, administrative, other roles, and reporting).

... [Continue reading](#)

• New “All About Grants” Podcast on NIH’s Inclusion Across the Lifespan Policy

Starting January 29, 2019, NIH will begin implementing the Inclusion Across the Lifespan policy, which requires the consideration of age, along with sex/gender and race/ethnicity, in applications that involve human participants. What does this policy mean for you and your study?

Dawn Corbett, NIH’s Inclusion Policy Officer, answers these questions and more in another installment of the “All About Grants” podcast. Listen in for advice on designing your study to comply with the Inclusion Across the Lifespan policy ([MP3](#) / [Transcript](#)).

More podcasts are available on our [All About Grants](#) podcast page.

• RPPRs: Who Can Do What?

A new resource, [RPPRs: Who Can Do What?](#) provides a quick look at the Annual, Interim, and Final Research Performance Progress Reports (RPPRs), including information such as due dates and how to access RPPR links. It also charts what happens to the Interim RPPR when a Type 2, Competing Renewal application is submitted.

National Research Mentoring Network



NRMN @ ABRCMS 2018- Travel Award Programs; Apply Today!



[ABRCMS](#) is one of the nation's largest STEM conferences for underrepresented minority students. Over the four days, more than 2,000 students present their research, explore over 380 exhibit booths, participate in cutting edge scientific sessions and network with faculty and peers from across the nation.

Research faculty provide the students with valuable feedback by serving as presentation judges and play an essential role in mentoring students and learning strategies for facilitating student success.

The [Annual Biomedical Research Conference for Minority Students](#) (ABRCMS) is inviting applications for two travel award programs.

- Research faculty and mentors willing to serve as judges at ABRCMS 2018 are eligible to apply for the [ABRCMS Judge Travel Award](#). Apply by **July 20th**

- Undergraduates, postbaccalaureates, and terminal level master's students are invited to showcase their research by [submitting abstracts](#) for presentation. The abstract submission deadline is **September 7th**
- Travel funds are available to eligible undergraduates and postbaccalaureates students who submit an abstract for poster or oral presentation. The deadline to [apply for a travel award](#) is **August 22nd**

Questions? Contact abrcms@asmusa.org.

NIH Acknowledgement

So that we can most effectively communicate the scope and results of our funding support, we would like to know when you are planning news announcements about IDeA awards or program activities and achievements...

When you produce such material, please be sure to identify the IDeA program, not just the INBRE, COBRE or sub-program, and to provide context about the program's goals along the lines of:

The University of _____ has received \$XXX from the National Institutes of Health (NIH) to support an Institutional Development Award (IDeA) Center of Biomedical Research Excellence. The IDeA program builds research capacities in states that historically have had low levels of NIH funding by supporting basic, clinical and translational research; faculty development; and infrastructure improvements.

In journal articles, news releases, or other materials about your program's activities or achievements, please use funding acknowledgement language such as:

Research reported in this {publication, release} was supported by an Institutional Development Award (IDeA) from the National Institute of General Medical Sciences of the National Institutes of Health under grant number 5 P20 GM103424-15 and 3 P20 GM103424-15S1.

- In journal articles, oral or poster presentations, news releases, news and feature articles, interviews with reporters and other communications, acknowledge the IDeA program's full or partial support of the research. The citation in scientific publications should use the following format:

Research reported in this publication was supported by an Institutional Development Award (IDeA) from the National Institute of General Medical Sciences of the National Institutes of Health under grant number P20GM12345.

- If you wish to acknowledge NIH/NIGMS funding on your Web site or other communication product, you may use wording such as:

Funded by an Institutional Development Award (IDeA) from the National Institutes of Health.

or

Funded by the LBRN (P20GM12345)an Institutional Development Award (IDeA) from the National Institute of General Medical Sciences of the National Institutes of Health.

Please do not use the NIH or NIGMS logo to acknowledge funding, as these logos are only to be used for material produced by NIH and its components.



Copyright © LBRN

Want to change how you receive these emails?

You can [update your preferences](#) or [unsubscribe from this list](#).

This email was sent to <<Email Address>>

[why did I get this?](#) [unsubscribe from this list](#) [update subscription preferences](#)

LSU · Louisiana State University · 2017 Digital Media Center · Baton Rouge, La 70803 · USA

